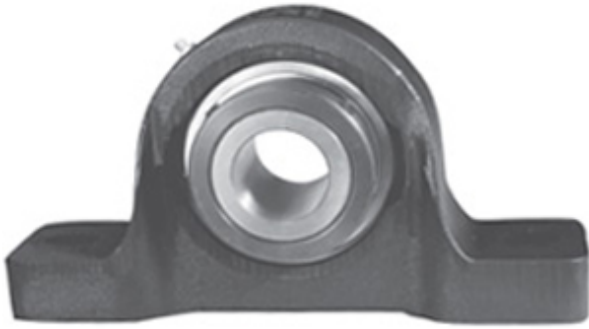




## NTA BEARING PRECISION AXLE CORP.

3 Inch | 76.2 Millimeter x 4.406 Inch | 111.912  
Millimeter x 4.563 Inch | 115.9 Millimeter LINK  
BELT PU348 Pillow Block Bearings



PU348 Bearing 2D drawings and 3D CAD models

Bearing No. PU348

Category	Pillow Block Bearings
Inventory	0.0
Manufacturer Name	REXNORD
Minimum Buy Quantity	N/A
Weight	25.574
EAN	0662327962876
Product Group	M06110
Number of Mounting Holes	2
Mounting Method	Concentric Collar
Housing Style	2 Bolt Pillow Block
Rolling Element	Ball Bearing
Housing Material	Cast Iron
Expansion / Non-expansion	Non-expansion
Mounting Bolts	7/8 Inch
Relubricatable	Yes
Insert Part Number	UG348L
Seals	Steel Clad Clearance
Housing Configuration	1 Piece Solid
Inch - Metric	Inch
Other Features	Single Row   Heavy Duty   Single Collar   Standard Backing   With Set Screw
Long Description	2 Bolt Pillow Block; 3" Bore; 4-9/16" Base to Center Height; Concentric Collar Mount; Ball Bearing;



## NTA BEARING PRECISION AXLE CORP.

	Relubricatable; Cast Iron; Steel Clad Clearance; Non- expansion
Category	Pillow Block
UNSPSC	31171511
Harmonized Tariff Code	8483.20.40.40
Noun	Bearing
Keyword String	Pillow Block
Manufacturer URL	<a href="http://www.rexnord.com">http://www.rexnord.com</a>
Manufacturer Item Number	PU348
Manufacturer Internal Number	5896287
Weight / LBS	53
Nominal Bolt Center to Center	12.4 Inch   315 Millimeter
D	4.406 Inch   111.912 Millimeter
Actual Bolt Center to Center	12.3 Inch   312.4 Millimeter
Bolt Spacing Minimum	0 Inch   0 Millimeter
B	4.563 Inch   115.9 Millimeter
d	3 Inch   76.2 Millimeter
Bolt Spacing Maximum	0 Inch   0 Millimeter