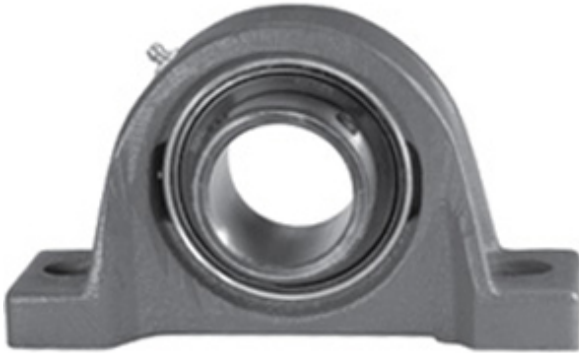




NTA BEARING PRECISION AXLE CORP.

2.188 Inch | 55.575 Millimeter x 2.25 Inch | 57.15 Millimeter x 2.438 Inch | 61.925 Millimeter LINK BELT PL3U235E3 Pillow Block Bearings



PL3U235E3 Bearing 2D drawings and 3D CAD models

Bearing No. PL3U235E3

Category	Pillow Block Bearings
Inventory	0.0
Manufacturer Name	REXNORD
Minimum Buy Quantity	N/A
Weight	3.36
EAN	0793699001488
Product Group	M06110
Number of Mounting Holes	2
Mounting Method	Set Screw
Housing Style	2 Bolt Pillow Block
Rolling Element	Ball Bearing
Housing Material	Cast Iron
Expansion / Non-expansion	Non-expansion
Mounting Bolts	5/8 Inch
Relubricatable	Yes
Insert Part Number	UG235E3L
Seals	Triple Lip Contact
Housing Configuration	1 Piece Solid
Inch - Metric	Inch
Other Features	Single Row Standard Duty Low Base Wide Inner Race
Long Description	2 Bolt Pillow Block; 2-3/16" Bore; 2-7/16" Base to Center Height; Set Screw Mount; Ball Bearing; Relubricatable;



NTA BEARING PRECISION AXLE CORP.

	Cast Iron; Triple Lip Contact; Non-expansion
Category	Pillow Block
UNSPSC	31171511
Harmonized Tariff Code	8483.20.40.40
Noun	Bearing
Keyword String	Pillow Block
Manufacturer URL	http://www.rexnord.com
Manufacturer Item Number	PL3U235E3
Manufacturer Internal Number	5800148
Weight / LBS	7.4
B	2.438 Inch 61.925 Millimeter
d	2.188 Inch 55.575 Millimeter
Bolt Spacing Minimum	0 Inch 0Millimeter
D	2.25 Inch 57.15 Millimeter
Actual Bolt Center to Center	6.8 Inch 171.5Millimeter
Nominal Bolt Center to Center	6.8 Inch 171.5 Millimeter
Bolt Spacing Maximum	0 Inch 0Millimeter