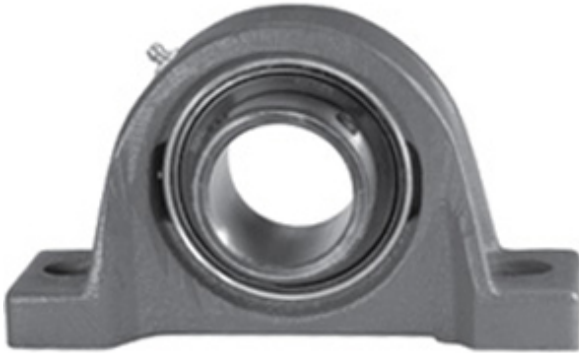




NTA BEARING PRECISION AXLE CORP.

0.625 Inch | 15.875 Millimeter x 1.094 Inch | 27.8
 Millimeter x 1.063 Inch | 27 Millimeter LINK
 BELT PL3U210N Pillow Block Bearings



PL3U210N Bearing 2D drawings and 3D CAD models

Bearing No. PL3U210N

Category	Pillow Block Bearings
Inventory	0.0
Manufacturer Name	REXNORD
Minimum Buy Quantity	N/A
Weight	0.272
EAN	0662327118501
Product Group	M06110
Number of Mounting Holes	2
Mounting Method	Set Screw
Housing Style	2 Bolt Pillow Block
Rolling Element	Ball Bearing
Housing Material	Cast Iron
Expansion / Non-expansion	Non-expansion
Mounting Bolts	3/8 Inch
Relubricatable	Yes
Insert Part Number	UG210NL
Seals	Single Lip Contact
Housing Configuration	1 Piece Solid
Inch - Metric	Inch
Other Features	Single Row Standard Duty Low Base Wide Inner Race
Long Description	2 Bolt Pillow Block; 5/8" Bore; 1-1/16" Base to Center Height; Set Screw Mount; Ball Bearing; Relubricatable;



NTA BEARING PRECISION AXLE CORP.

	Cast Iron; Single Lip Contact; Non-expansion
Category	Pillow Block
UNSPSC	31171511
Harmonized Tariff Code	8483.20.40.40
Noun	Bearing
Keyword String	Pillow Block
Manufacturer URL	http://www.rexnord.com
Manufacturer Item Number	PL3U210N
Manufacturer Internal Number	5811850
Weight / LBS	0.9
d	0.625 Inch 15.875 Millimeter
Actual Bolt Center to Center	3.5 Inch 90Millimeter
B	1.063 Inch 27 Millimeter
Bolt Spacing Maximum	0 Inch 0Millimeter
D	1.094 Inch 27.8 Millimeter
Nominal Bolt Center to Center	3.6 Inch 92 Millimeter
Bolt Spacing Minimum	0 Inch 0Millimeter